



SERAC 85 Coffee Table with HPL Top

Ø 33 1/2" H 14 1/8"

36.3 lbs

Powder coated stainless steel & HPL

SERAC 85 Coffee Table with Ceramic Top

Ø 33 1/2" H 14 1/8"

55.8 lbs

Powder coated stainless steel & ceramic

SERAC: BASE



White



Anthracite

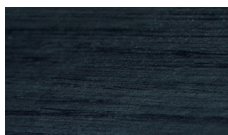
SERAC: TABLE TOP



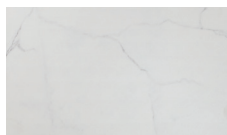
HPL White



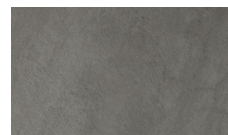
HPL Black



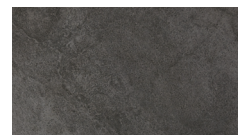
HPL Nordic Black



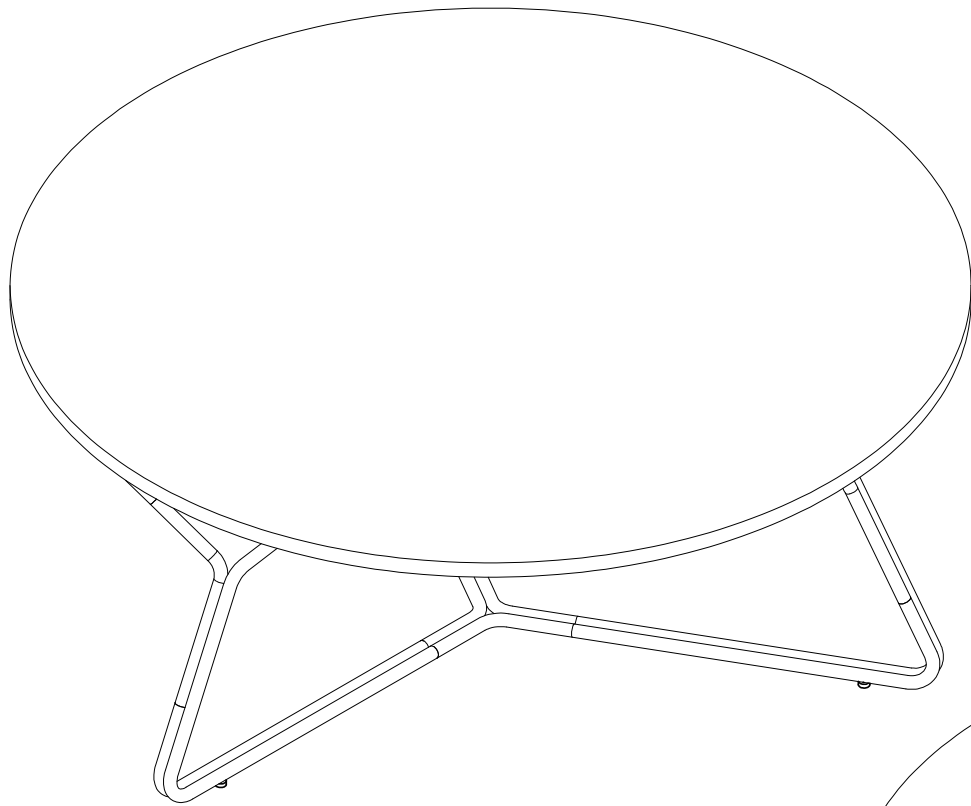
Ceramic White



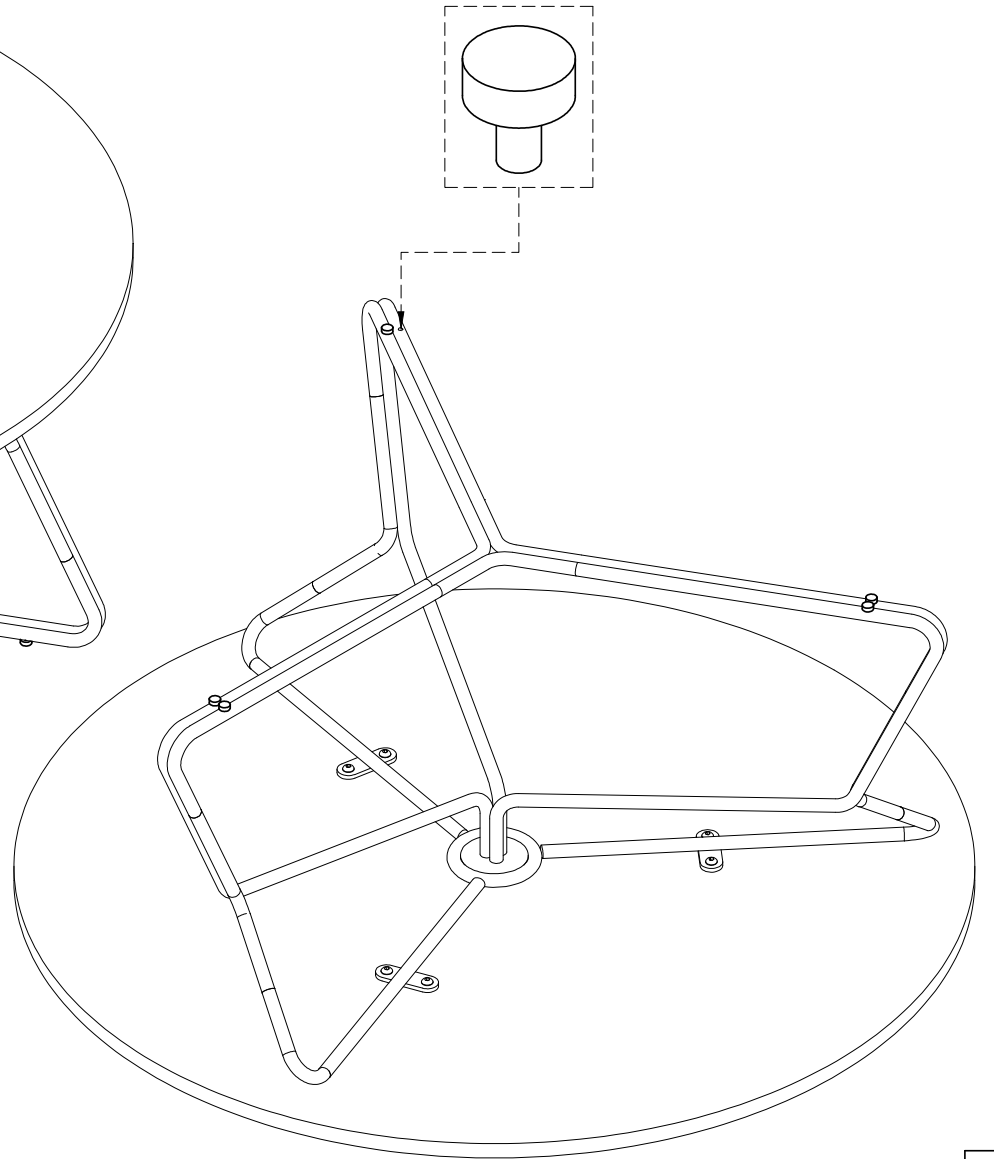
Ceramic Grey



Ceramic Anthracite



ISO VIEW



OASIQ

DWG.NO: FAEOA11-3

TITLE : ISO VIEW

DIM EXT: D660X358.7MM

MATERIAL: SS304

DRAWN BY : SARANYA

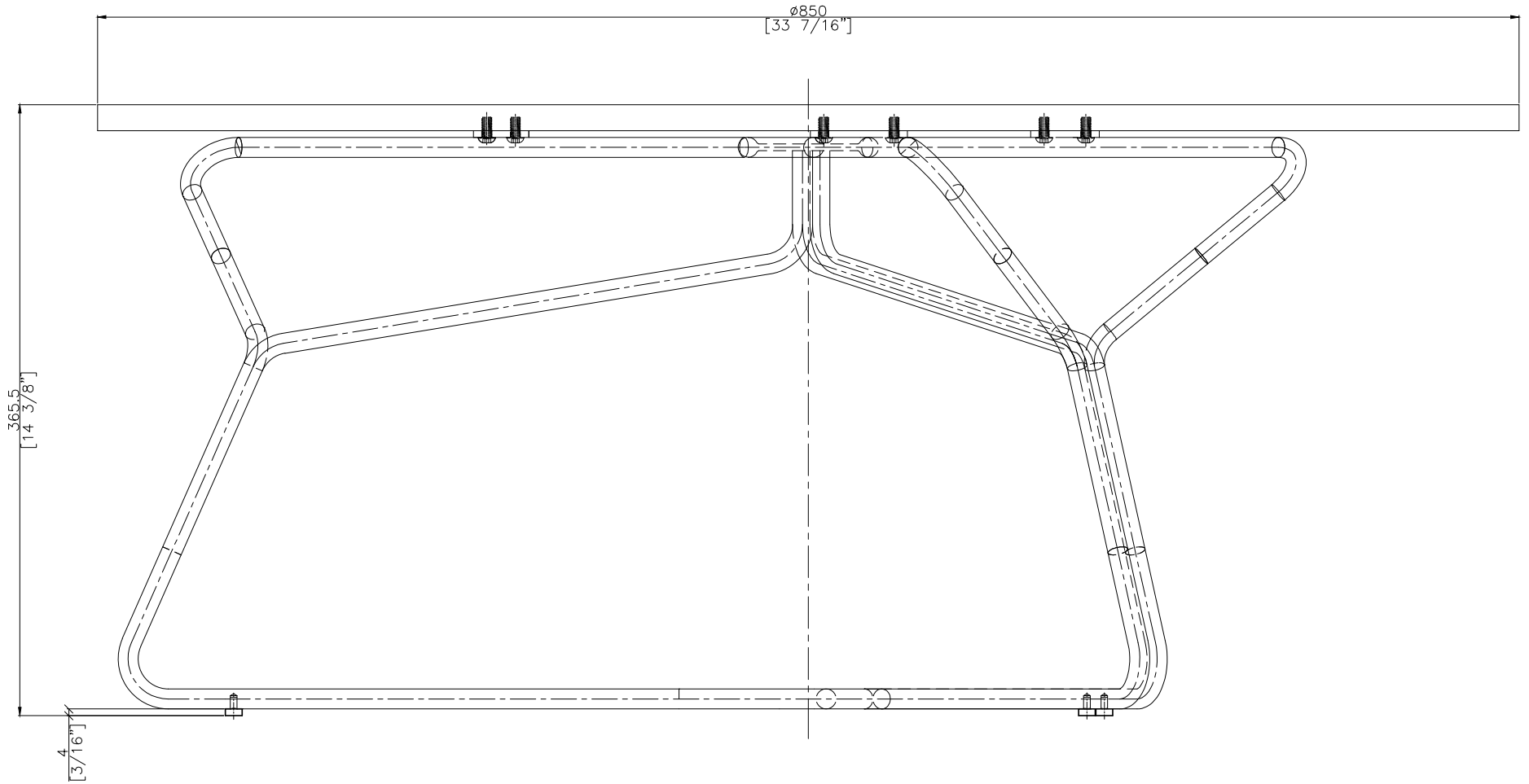
FINISH DATE : 10-12-14
BEGIN DATE : 15-02-14

JACK
ALGIN

SCALE : 1:1
⊕ ⊞

ISO

P. 2



FRONT VIEW

EF

OASIQ

DWG.NO: FAEOA11-3

TITLE : FRONT VIEW

DIM EXT: ø850x365.5 MM.

MATERIAL: SS304

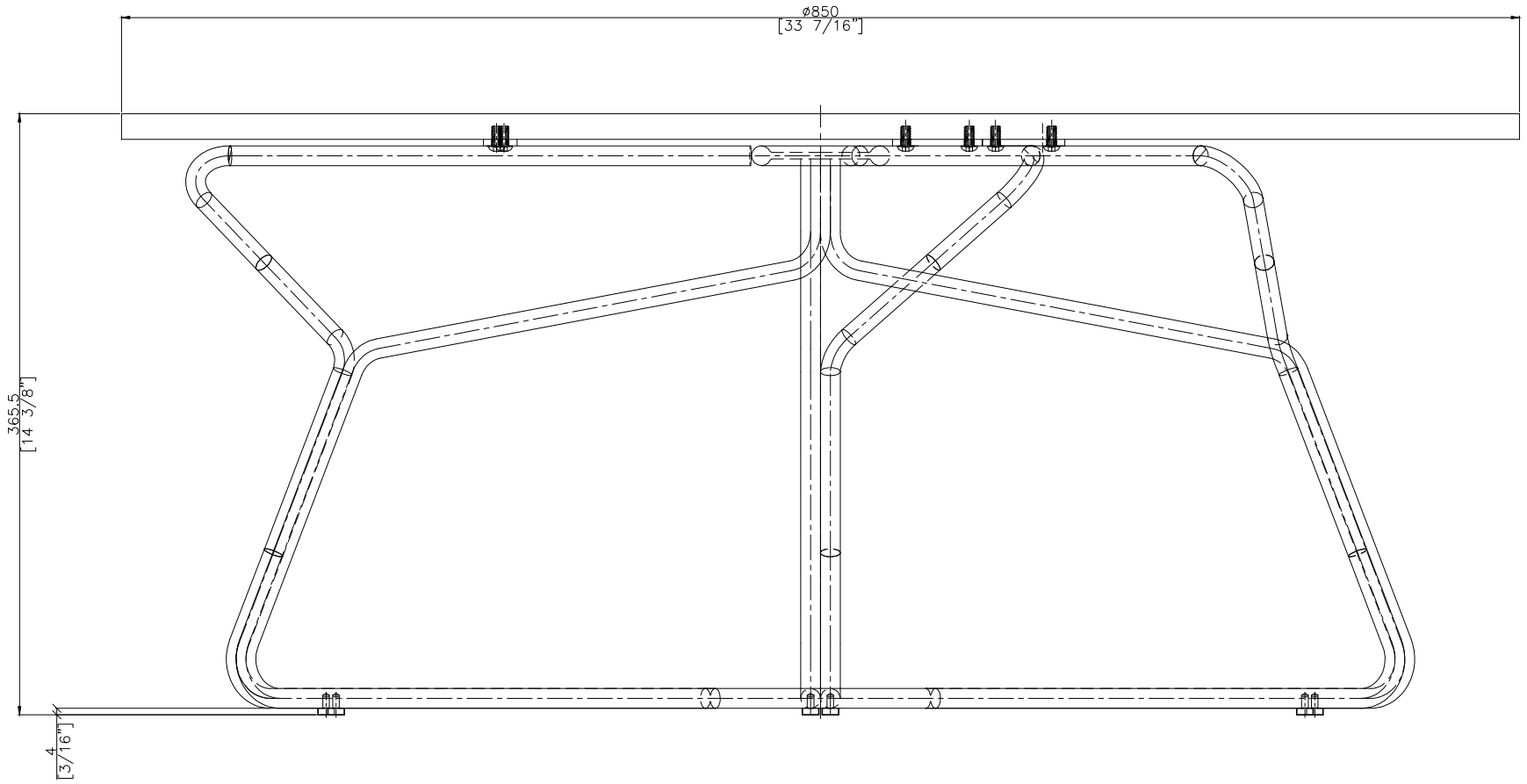
DRAWN BY : SARANYA

FINISH DATE : 10-12-14
 BEGIN DATE : 15-02-14

JACK
 ALGIN

SCALE : 1:1

P. 4



SIDE VIEW

ES

OASIQ

DWG.NO: FAE0A11-3

TITLE : SIDE VIEW

DIM EXT: $\phi 850 \times 365.5$ MM.

MATERIAL: SS304

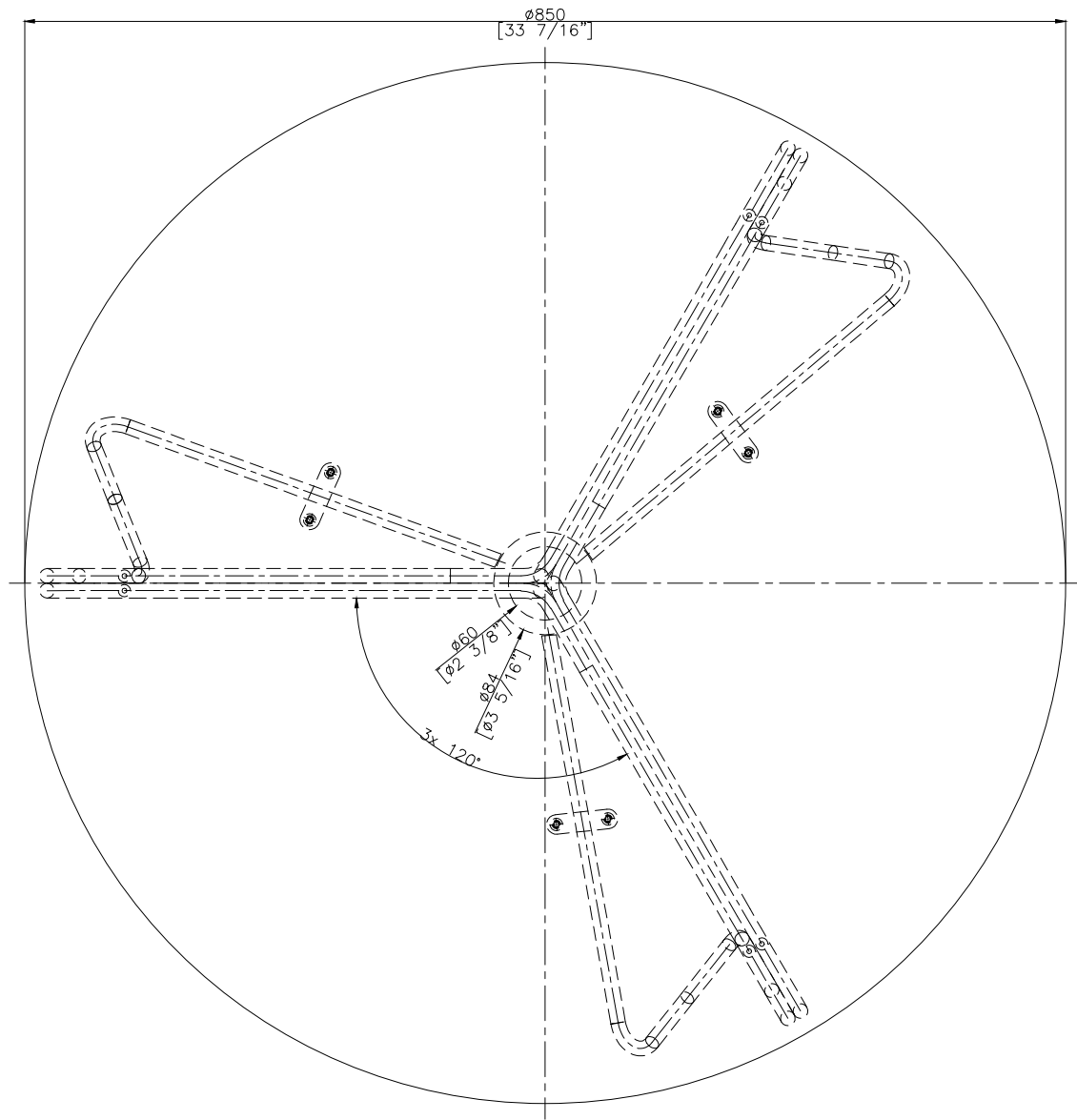
DRAWN BY : Mr.Khanti

FINISH DATE : 9-10-15
BEGIN DATE : 15-02-14

KHAN
ALGIN

SCALE : 1:1

P. 5



TOP VIEW

ET

OASIQ

DWG.NO: FAEOA11-3

TITLE : TOP VIEW

DIM EXT: ø850x365.5 MM.

MATERIAL: SS304

DRAWN BY : SARANYA

FINISH DATE : 17-02-15
 BEGIN DATE : 15-02-14

JACK
 ALGIN

SCALE : 1:1

P. 3